



Proposed move of Moorfields Eye Hospital's City Road services

Summary of a proposal to move Moorfields Eye Hospital's City Road services to a brand new centre just north of St Pancras and Kings Cross stations by 2026.

We need your views

Public consultation 24 May – 16 September 2019

Closing date for feedback – 16 September 2019

Published by NHS Camden Clinical Commissioning Group and NHS England Specialised Commissioning, in partnership with Moorfields Eye Hospital NHS Foundation Trust
24 May 2019

For further information about the proposed move and public consultation, please visit www.oriel-london.org.uk



The proposal for public consultation

A proposal called “Oriel”

Moorfields Eye Hospital is proposing to build a new centre bringing together excellent eye care, ground-breaking research and world-leading education in ophthalmology. We call this proposal Oriel. You can read the background to Oriel at www.oriel-london.org.uk

The proposed new site

The proposed new centre would be a multi-million pound development on land that has become available at the site of St Pancras Hospital, just north of King's Cross and St Pancras stations in central London.

Eye care services would move two and a half miles to the new centre from the current hospital on City Road in Islington, along with Moorfields' partner in research and education, the UCL Institute of Ophthalmology.

If the move were to go ahead, Moorfields and UCL would sell their current land at City Road and all proceeds of the sale would be reinvested in the new centre.

The decision will be made by January 2020

A decision to proceed to the next planning stages will be taken by the NHS organisations who plan and buy Moorfields' services. NHS Camden Clinical Commissioning Group (CCG) is leading this on behalf of all CCGs together with NHS England Specialised Commissioning, which commissions specialised services for the whole of England. They will decide whether the proposed move is:

- in the interests of the health of our populations, locally and nationally
- in line with our long-term plans to improve health and care
- an effective use of public money.

We need your views to help reach this decision

Already the views we have heard so far have introduced new ideas to the proposal since November 2018. This is your opportunity to influence eye care for future generations.

Timescales

If the proposal were to proceed, there would be a planning application by Autumn 2020, with construction starting in 2022. The proposed new centre could be open in 2025/26.

See page 9 for details on how to give your views.

For further information about the proposed move and public consultation, please visit www.oriel-london.org.uk



Why change?

We aim to provide the best care

Despite the age of the hospital at City Road, Moorfields provides excellent clinical care. The Care Quality Commission, which inspects NHS hospitals, recently rated Moorfields “outstanding” for the effectiveness of its services.

However, the experience of visiting Moorfields’ City Road site for patients and their families often involves long walks through confusing corridors and long waits in uncomfortable and sometimes overcrowded spaces.

We need to plan for the future

The number of people in older age groups who may be vulnerable to sight loss is expected to rise rapidly over the next 15 years. We need to plan for this growing population and find new ways to improve diagnosis and treatment, as close to home as possible and without the need for a hospital visit.

We need the best research

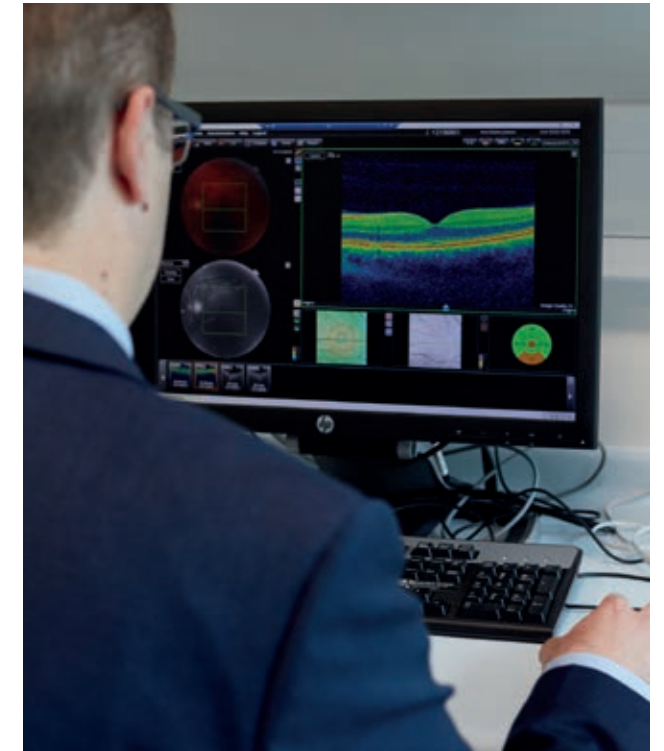
With new techniques and technology, we can improve prevention and discover new treatments for sight loss.

The current facilities at City Road date from the 1890s. There is very little space to expand our research capability, and the ageing buildings make it difficult to install new technology.

We need to train and develop our workforce

Our future patients need talented and caring people to become optometrists, orthoptists, nurses, consultants, technicians, researchers and support workers.

Moorfields and UCL provide the best eye care training in the world, but our education facilities are outdated and unsuited to modern methods of hands-on training.



We need a modern centre for all

The proposal is to build a new centre that we anticipate would have many benefits:

- Greater interaction between eye care, research and education – the closer clinicians, researchers and trainees work, the faster they can find new treatments and improve care.
- More space to expand and develop new services and technology to improve care, including care that could be available at home or locally, without the need for a hospital visit.
- Design for a smooth hospital appointment process, particularly where there are several different tests involved.
- Shorter journeys between test areas and instantly shared results between departments, which would reduce waiting times and improve communications between patients and staff.
- Modern and comfortable surroundings would provide easier access for disabled people and space for information, counselling and support.

Why St Pancras?

It is important to be in London

- London is the best place to recruit specialists, technicians, researchers and students.
- There are particular benefits from being close to other major specialist centres and research and education facilities at the main UCL campus at Euston.
- London is the most accessible UK location for most people, regardless of where they live.

A new building is preferable to rebuilding or refurbishment

We have looked at options for rebuilding and refurbishing at City Road.

The main advantage of staying where we are is that people are familiar with the route and there is relatively easy access by bus and underground, with a short walk to the hospital.

The main disadvantages:

- Limited space and scope for development, even with the possibility of demolishing some of the current buildings and building new ones.
- Rebuilding and even refurbishment would involve major disruption to services requiring some services to move out and then move back in again when the work is completed.
- Staying in the same place means that money would need to be spent on new buildings, but there would be no proceeds from a land sale to pay for the development.
- Our estimate of costs over the next 50 years shows that it would cost more to maintain the existing site than to build a new centre.

The proposed St Pancras site offers several benefits

There are several potential sites in London that are close to public transport hubs. Our research narrowed this down to eight possible options including the land that has become available at the St Pancras Hospital site.

- Four of the eight potential sites (Elephant and Castle, Vauxhall, Stratford and White City) had high land costs and were considered too far away from other research and education establishments.
- Two potential sites in Southwark had high land costs.
- One site in Hammersmith and Fulham had limited size for future flexibility.

The main advantages of the land at St Pancras:

- It has enough space for the size of new build that we require and potential for future flexibility.
- It is reasonably near to two of the largest main line stations in London.
- It is close to other major health and research centres, the main campus of UCL and eye charities, such as Guide Dogs and the Royal National Institute of Blind People (RNIB).
- There is potential to build with minimal disruption to current services, which would continue until the new centre was open.
- The eventual sale of the City Road site would create funds to invest in the proposed new centre.
- Our estimate of costs over the next 50 years shows that it would cost less to run the new centre than to maintain the current site.

The main disadvantages:

- Changes in transport routes and access for people who have used Moorfields services for many years.
- Potential challenges in getting to the proposed site via bigger and more complicated rail and underground stations.
- Potential challenges of a longer route from public transport hubs to the proposed site.

The proposed move from City Road to St Pancras does not include changes to Moorfields' services at its 30 other sites, although over time these will be considered as part of a wider review of ophthalmology across London.

For more information on access and travel times to the proposed location at St Pancras, please visit www.oriel-london.org.uk

What would a new build at St Pancras cost?

To build a new centre would cost the NHS around £344m, which would come from:

- the sale of the City Road site
- donors to Moorfields Eye Charity
- central government funding
- funds from Moorfields Eye Hospital NHS Foundation Trust.



What people have told us so far



Between December 2018 and April 2019, we ran several surveys, discussion groups and drop-in events to get some initial thoughts on the proposed move.

What is clear from the feedback is that for many people who visit Moorfields, their relationship with City Road services is a critical part of their lives. Many people are regular visitors to the hospital and have been for decades. Any potential change could have significant impacts both negative and positive.

A recurring theme is stress and anxiety associated with a visit to the hospital. Most people feel that a new centre could be designed to reduce feelings of stress, to build patient confidence and improve the outcomes of the care we provide.

The main concerns are about the period of the potential move and getting used to a different location. People have told us how they may need support to learn the new route, for example, and to learn how to use the new service.

In summary, we have heard about the following priorities for patients and families:

- Clinical expertise above all else, even if this means travelling further to receive the highest quality specialist care.
- A smooth clinical pathway through the whole system from getting the first appointment to follow-up care and support.
- Easy, obstacle-free access from public transport.
- Efficient and caring experience at the hospital.
- Good communications and information.
- Person-to-person support, when needed.
- Being close to public transport hubs.
- Provision for access by ambulance and motor vehicles.
- Interior design to support wayfinding for people with sight loss.

For further information on how we have involved people and a detailed summary of feedback, you can find a full report on our website at **www.oriel-london.org.uk**

How to give your views

Closing date for feedback – 16 September 2019

We want to receive as many views as possible from patients, public, staff and partners during our public consultation. This includes views or suggestions on alternative solutions.

Taking into account your views, as well as other evidence for service change and value for public money, NHS England Specialised Commissioning and the 14 clinical commissioning groups, who buy the majority of Moorfields' services, will decide by January 2020 whether the proposed move should proceed to the next stages of planning.

You are welcome to make suggestions about what the buildings might look like, but that is not what we are consulting on at this stage. There will be opportunities in the future for you to give us your thoughts on these and other aspects of the new centre, should the proposal proceed to the next stage.

Here are the ways to get involved:

- Come along to one of our open discussion groups. The dates and venues are listed overleaf.
- Visit www.oriel-london.org.uk where you will find a more detailed consultation document and other information, including Easy Read, text only and audio versions.
- Let us know your views by completing the feedback survey online at <http://oakhamwarp.dinksurveys.com/Moorfields>
- You can also download print copies and return your completed survey by email or freepost (no stamp needed).
- Write to us by post or email. Send your views to the consultation team at the address below.
- If your group or organisation would like to meet to discuss the proposed move, please contact the consultation team at the address below.
- The team can arrange printed copies, braille and versions of the consultation document or summary in languages other than English. Please get in touch if you need help.

Contact us

Please contact us via our consultation team, using the contact details below:

Email:	moorfields.oriel@nhs.net
Phone:	020 7521 4684
Mail to:	Freepost ORIEL (no need for a stamp or any other address details)



Open discussion groups

The proposed move of Moorfields needs your views. Come and join the discussion at any of the open discussion groups listed opposite.

To book your place at any of the events below, you can book online at <https://oriel-consultation.eventbrite.co.uk> or you can contact the consultation team at moorfields.oriel@nhs.net or 020 7521 4684.

Tuesday 4 June	2pm to 3.30pm	London Vision South East , 7-14 Great Dover Street, London SE1 4YR
Monday 10 June	11am to 12.30pm	St Pancras and Somers Town Living Centre , 2 Ossulston Street, King's Cross, London NW1 1DF
Monday 10 June	2pm to 3.30pm	St Pancras and Somers Town Living Centre , 2 Ossulston Street, King's Cross, London NW1 1DF
Thursday 13 June	1pm to 3pm	Albert Jacob House , Room 101, 62 Roman Road, Bethnal Green E2 OPG
Monday 17 June	2pm to 3.30pm	The Beehive Centre , Healthwatch Thurrock, West Street, Grays, RM17 6XP
Wednesday 19 June	11am to 12.30pm	Voluntary Action Islington , 200A Pentonville Rd, London N1 9JP
Wednesday 19 June	2pm to 3.30pm	Voluntary Action Islington , 200A Pentonville Rd, London N1 9JP
Thursday 20 June	2pm to 3.30pm	Welwyn Garden City Central Library , Campus West, Hertfordshire AL8 6AJ
Monday 24 June	2pm to 3.30pm	The Pocklington Hub , Entrance D Tavistock House South, Tavistock Square, London WC1H 9LG
Tuesday 25 June	2pm to 3.30pm	Tooting Library , 75 Mitcham Rd, Tooting, London SW17 9PD
Wednesday 26 June	2pm to 3.30pm	West Acton Community Centre , Churchill Gardens, West Acton, London W3 0JN
Monday 1 July	2pm to 3.30pm	Kesgrave Community Centre , Twelve Acre Approach, Kesgrave, Ipswich IP5 1JF
Thursday 4 July	2.30pm to 4pm	London Vision East , Waltham Forest Resource Hub (South), 90 Crownfield London E15 2BG
Thursday 4 July	6pm to 7.30pm	London Vision East , Waltham Forest Resource Hub (South), 90 Crownfield London E15 2BG



Please contact us via our consultation team, using the contact details below:

Email: moorfields.oriel@nhs.net

Phone: 020 7521 4684

Mail to: Freepost ORIEL
(no need for a stamp or any other address details)

**For further information about the proposed move and public consultation,
please visit www.oriel-london.org.uk**