



Oriel
Creating the centre for
advancing eye health



Proposal to move Moorfields Eye Hospital



Contents

Page



Introduction

3



The proposal

4



Why change?

6



Why build at St Pancras?

10



What would it cost?

14



What people told us so far

15



What do you think?

18



Open discussion groups

19



What next?

23



For more information

24

Introduction



This document explains the **proposal** to move Moorfields Eye Hospital from City Road to a new centre at St Pancras.



A **proposal** is a plan or an idea for people to think about and decide upon.

We want to know what you think about this proposal.



Please read this document and then tell us what you think by answering the questions in the separate questionnaire.



We need your answers by Monday 16 September 2019.



This document has been written by NHS Camden Clinical Commissioning Group, NHS England Specialised Commissioning and Moorfields Eye Hospital NHS Foundation Trust.

The proposal



Moorfields Eye Hospital is proposing to build a new centre.



The new centre will bring together:

- the best eye care and treatment.



- research into new treatments.



- teaching about eye treatments.



We call this proposal Oriel.

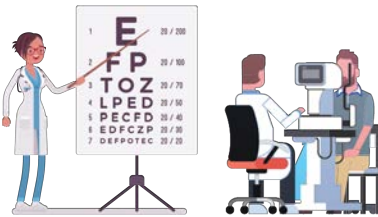


You can read about Oriel on our website at: **www.oriel-london.org.uk**



The proposed new site

We propose to build the new centre on some land on the site of St Pancras Hospital, just north of St Pancras and King's Cross Station.



All the services at Moorfields Eye Hospital would move to the new site.



The University College London (UCL) Institute of Ophthalmology would also move to the new site.

They research and teach about eye treatments.



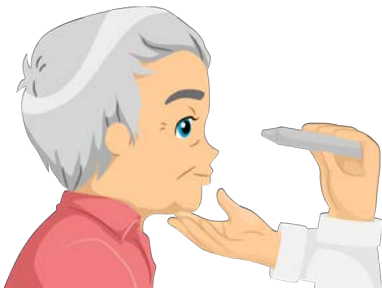
Moorfields Eye Hospital and UCL would sell their land on City Road and use the money to build the new centre.

Why change?



Eye disease is increasing

People are living longer. There are many more older people.



Older people are more likely to have problems with their eyesight.



We think that there will be many more people with eye disease in the next 15 years.

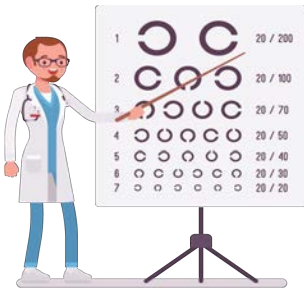
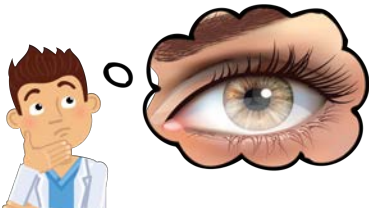


We need to plan for more people needing help with eye problems.

We need the best research

We are finding new ways to:

- understand eye disease.



- stop people having problems with their eyes.



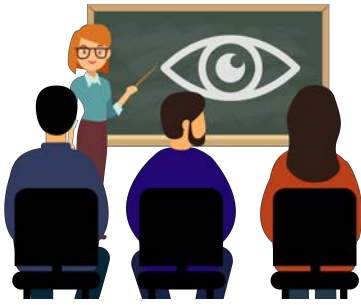
- notice problems early so we can treat them better.



With research we can discover new cures and treatments.



There is not enough space at City Road to grow. Some of the buildings are over 125 years old.



We need to train and develop our workforce

We need more people to learn how to be eye doctors and other health professionals.



Moorfields and UCL give the best eye care training in the world, but the buildings are old fashioned and need a lot of work.



We aim to carry on giving the best care

Moorfields Eye Hospital provides excellent care and treatment.



The Care Quality Commission, who inspect hospitals for the government, says that we are 'outstanding'.



But patients and visitors find it difficult to get around the old buildings.

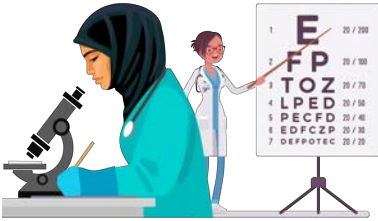
Waiting areas are often too crowded and uncomfortable.



We need a new building to be able to carry on giving the best care and treatment.

A new centre can be designed for a better future

A new centre would make a big difference in the lives of people with eyesight problems because:



- more doctors, researchers and teachers would be able to work closer together.



- we would have more space to develop new services and ways to treat eye problems.



- we can design a new hospital that is easier for patients, meaning shorter waiting times.



- we can design it to be easier to use for people with disabilities.

Why build at St Pancras?



It is important to be in London

Many of the best specialist doctors and health professionals want to be in London.



It is useful to be close to other specialist health services, and universities.

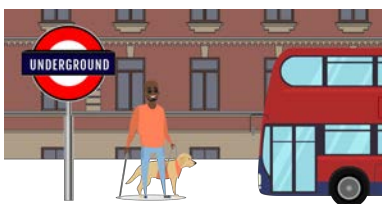


Most people in the UK can travel to London.



Should we stay at City Road?

We have thought about changing and repairing the buildings at City Road.



If we did this, people would know how to get to the hospital. It is close to bus stops and the underground.

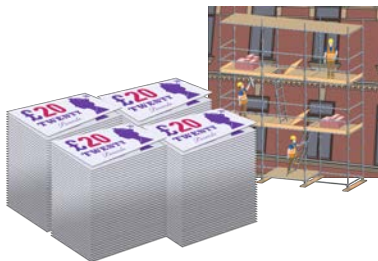
But...



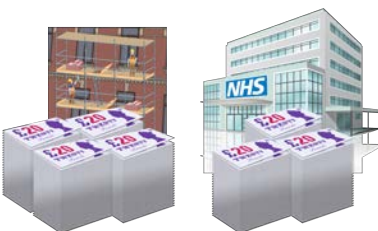
- There is not much space. It would be hard to build the larger new buildings we need.



- Changing and repairing the buildings would be difficult. Patients would have to go to another building while the work was being done.



- It would cost money to change and repair the buildings. But we would not have the money from selling the land.



- We think that it would cost more to stay at City Road than to move to the proposed new site.



The proposed site at St Pancras

We looked at 8 possible sites for the new centre, but we think that St Pancras is the best because:



- there is enough space for the building we need.



- it is close to 2 main line stations.



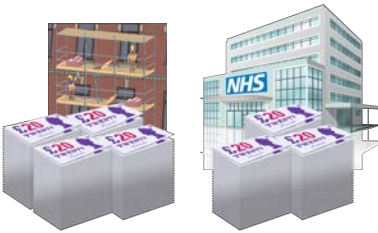
- it is close to important organisations like:
 - University College London (UCL)
 - Guide Dogs for the Blind
 - Royal National Institute for the Blind (RNIB)



- we could build the new hospital without disturbing the existing services.



- we need to buy the new land. But we can pay for it by selling the old land on City Road.



- we think that it would be cheaper to build a new hospital here than change and repair the old hospital.



Possible problems with moving to St Pancras are:

- People would have to find a new way to travel to get their eye treatment.



- It might be harder to get to the new site by tube and rail.



- It might take longer to walk from the bus stops and tube stations.

What would it cost?



To build a new centre would cost the NHS around £344 million.



This money would come from:

- selling the City Road site.
- people who have given money to the Moorfields Eye Charity.
- the government.
- the Moorfields Eye Hospital NHS Foundation Trust.



What people have told us so far



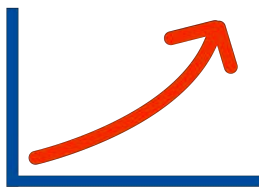
We have been asking people about the proposed move to St Pancras.



Lots of people have been coming to Moorfields Eye Hospital for many years.



Some people say they feel anxious and stressed about visits to the hospital.



Some people see the move as an opportunity to improve services.



But some people are worried about having to learn a new way to get to the hospital.



The most important things for people are:

- having the best care and treatment.



- health professionals working together.



- getting to the hospital, including in an emergency.



- everything working well at the hospital.



- good communications and information.



- support when needed.



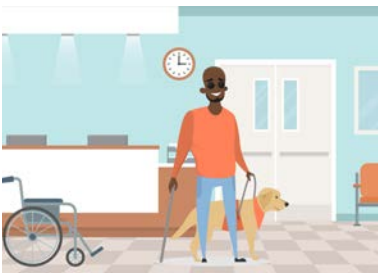
- close to public transport.



- easy for ambulances and cars.



- easy walk from public transport to the hospital.



- easy to find your way around the hospital.

What do you think?



Please tell us what you think about these proposals.



You can give us your views by:

- coming to one of our open discussion groups. See page 19 for details.



- going to the Oriel website: **www.oriel-london.org.uk**. You can download the Easy Read questionnaire.

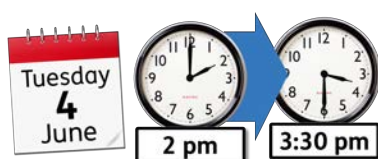


- emailing us at: **moorfields.oriel@nhs.net**

Open discussion groups



You can book to come to any of these open discussion groups.
You can book your place at:
www.oriel-london.org.uk



Tuesday 4 June

2 - 3.30pm

London Vision South East

7-14 Great Dover Street
London SE1 4YR



Monday 10 June

11am to 12.30pm

St Pancras and Somers Town Living Centre

2 Ossulston Street
Kings Cross NW1 1DF



Monday 10 June

2 - 3.30pm

St Pancras and Somers Town Living Centre

2 Ossulston Street
Kings Cross NW1 1DF



Thursday 13 June

1 - 3pm

Albert Jacob House

Room 101

62 Roman Road E2 OPG



Monday 17 June

2 - 3.30pm

The Beehive Centre

Healthwatch Thurrock

West Street

Grays RM17 6XP



Wednesday 19 June

11am to 12.30pm

Voluntary Action Islington

200A Pentonville Rd

London N1 9JP



Wednesday 19 June

2 - 3.30pm

Voluntary Action Islington

200A Pentonville Rd

London N1 9JP



Thursday 20 June

2 - 3.30pm

Welwyn Garden City Central Library

Campus West

Hertfordshire AL8 6AJ



Monday 24 June

2 - 3.30pm

The Pocklington Hub

Entrance D Tavistock House South
Tavistock Square
London WC1H 9LG



Tuesday 25 June

2 - 3.30pm

Tooting Library

75 Mitcham Rd

Tooting

London SW17 9PD



Wednesday 26 June

2 - 3.30pm

West Acton Community Centre

Churchill Gardens

West Acton

London W3 0JN



Monday 1 July

2 - 3.30pm

Kesgrave Community Centre

Twelve Acre Approach

Kesgrave

Ipswich IP5 1JF



Wednesday 4 July

2 - 4pm

London Vision East

Waltham Forest Resource Hub (South)

90 Crownfield

London E15 2BG



Wednesday 4 July

6 - 7.30pm

London Vision East

Waltham Forest Resource Hub (South)

90 Crownfield

London E15 2BG

What next?



Your views will help us to make the final decision.



During the winter of 2019-2020 the NHS organisations that plan services will decide whether Moorfields Eye Hospital should move.

For more information

If you need more information please contact us by:



Email: **moorfields.oriel@nhs.net**



Phone: **020 7521 4684**



Post:

Freepost ORIEL

You do not need a stamp.

Easy read by **easy-read-online.co.uk**