



Oriel

Creating the centre for
advancing eye health



Moorfields and UCL Eye Health

Summer 2021



Moorfields
Eye Charity



Moorfields
Eye Hospital
NHS Foundation Trust





Oriel

Creating the centre for
advancing eye health

Introduction

3



About the partners

4



Oriel Project

5



Why change?

6



Building the new centre

9



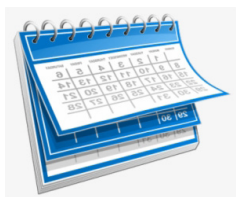
Getting to the new centre

13



Helping the area

14



When will this happen?

15



What do you think?

16

Introduction



The project is a partnership between Moorfields Eye Hospital NHS Foundation Trust (Moorfields), UCL, and Moorfields Eye Charity.



Oriel
Creating the centre for
advancing eye health

We call this project Oriel. On the last page you can find out how to tell us what you think.



These three organisations plan to move to a new centre at St Pancras.



We want to know your views on our plans.

About the partners



**Moorfields
Eye Hospital**
NHS Foundation Trust



Moorfields Eye Hospital is where people go to have eye problems treated. It is part of the NHS and treats people from all over the U.K.



The University College London (UCL) Institute of Ophthalmology teaches people about eye care and they also research eye problems. UCL works very closely with the eye hospital.



**Moorfields
Eye Charity**

Moorfields Eye Charity raises money for eye research, education and care.

Oriel project

The new centre will bring together...



- The best eye care and treatment.



- Research into new treatments.



- Teaching about eye treatments.

Why change?



People are living longer.
There are many more older people.



Older people are more likely
to have problems with their
eyesight.

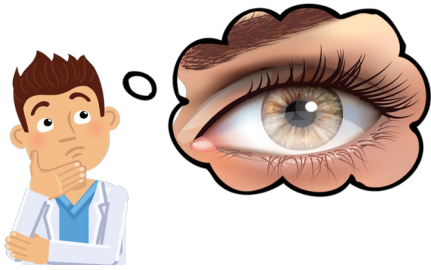


We think there will be many
more people with eye disease
in the next 15 years.

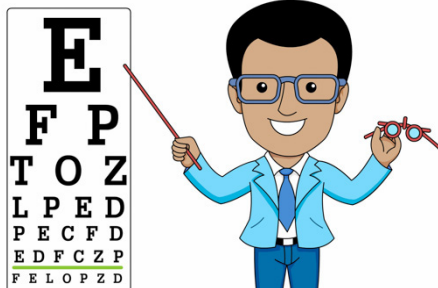


We need more space to help
people with eye problems.
Our buildings are old and we
do not have enough space.

A new centre will help us find new ways to...



- Understand eye disease.



- Stop people having problems with their eyes.



- Notice problems early so we can treat them better.



- Research new cures and treatments.



- Train more people to be eye doctors and other health professionals.

A new eye health centre will make a big difference to people with eye problems



- More doctors, researchers and teachers will be able to work closer together.



- We will have more space to treat eye problems.

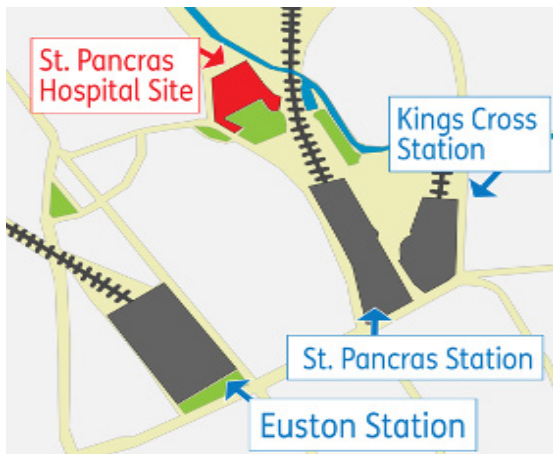


- We will have shorter waiting times.



- It will be easier for everyone to use.

Building the new centre



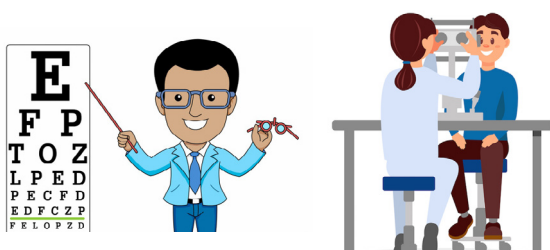
We have chosen to build the new eye health centre on the St Pancras Hospital site in Camden.



The new centre will be on land shared with other new buildings.



The new centre will be welcoming to everyone.



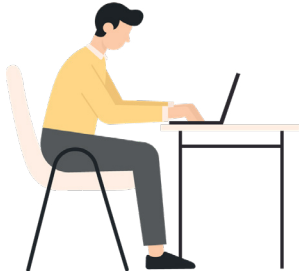
People will come for eye check ups and treatment.



People will come for emergency eye care.



People may come to take part in research.



Some people will work in the centre every day.



Some people will come to the building to learn.



The new centre will have spaces for people who work there to meet, study and work together.

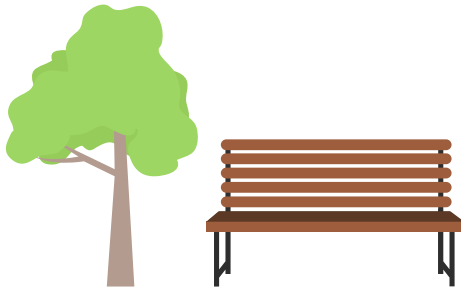


The new centre will have a big space in the middle of the building called an atrium.

We will have:



Places for people to sit and eat.



New public squares for people to visit.

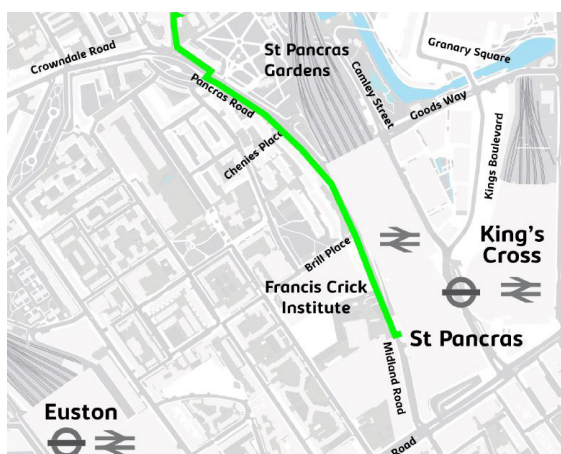


New pathways to reach other areas nearby.

Getting to the new centre

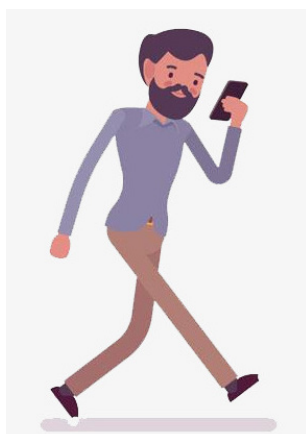


People can travel by train, tube, bus, car, taxi or cycle.



Many people will choose to walk the last part of their journey.

From Kings Cross station there will be a green line on the pavement to follow.



Some people will use their mobile phone to find the way.



Some people will come with a friend or relative.

The new centre will help the local area around Camden



There will be new jobs and training.



Some people who work there will be able to cycle to work.



It will be one of the best eye health centres in the world.



The new centre will be better for the environment.

When will this happen?



June 2021

Camden Council are happy with our proposals.

**GREATER
LONDON
AUTHORITY**

Autumn 2021

The Greater London Authority will now consider our planning application.



2022-2023

We hope to start building the new centre.



2026

The new centre should be open.



We are talking to people about the new centre now.

You can find out more about the proposal here:
www.oriel-london.org.uk

You can give us your views by:



Email: moorfields.oriel@nhs.net



Visiting our website:
www.oriel-london.org.uk/get-involved/