

Oriel construction community newsletter

July 2024



Dear neighbour,

Here's the latest update on the progress of Oriel, the new world-leading centre for eye care, research and education, that we are building on St Pancras Way. With construction well under way, we want to make sure you're kept informed about the next steps and how they may impact you.



Oriel will bring together a range of expertise in a purpose-built, integrated centre to support advances in eye care, research and education.



Oriel is being constructed on a two-acre site on St Pancras Way.

Meet the Bouygues UK team

We look forward to working with you over the next three years and being considerate constructors within the borough of Camden.

We support the local community with apprenticeships, work experience placements, engage with educational institutions in the area and take part in local charity initiatives. Read more about these initiatives in the newsletter.

Your key contacts are:



Neil Pixsley
Project director
neil.pixsley@bouygues-uk.com





Eric Pincemin
Production director
eric.pincemin@bouygues-uk.com



Sam Mayo
Resident liaison
samantha.mayo@bouygues-uk.com

Stay up to date

There are lots of ways to find out more about Oriel.

-  Moorfields.oriel@nhs.net
-  www.oriel-london.org.uk





Onsite activities

Since our last newsletter we have increased activity on and around the site:

- More than 120 skilled operatives are working onsite
- 3,800 cubic metres of concrete has been poured with 1,000 tonnes of steel reinforcements which required around 700 lorry deliveries
- Concrete foundations and ground source boreholes are complete and the building has now reached level three
- Environmental monitoring is ongoing (noise, dust, vibration).



Upcoming activities

- The team will install a full-size mock-up that will exhibit some of the main rooms of the building, including a patient consultation room and a science laboratory. This will help us refine the construction sequence, design details and improve our delivery.



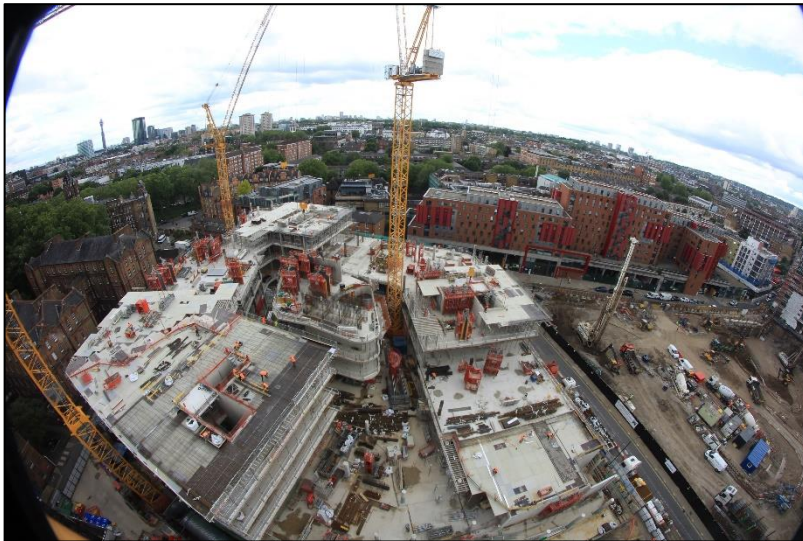
Oriel advisory group site visit



On 9 May, Oriel advisory group members, including patients, staff and partners, visited the site to review the site's progress. The visit began with a detailed presentation on the build's key aspects, achievements and future plans. Afterwards, members had a guided tour.

The Bouygues UK team created tactile concrete blocks and rebar frames to help attendees with varying levels of sight loss understand the construction process.

The site in April 2024



The site in July 2024





Protecting the environment

Bouygues UK is committed to taking care of and protecting the environment, preventing pollution, and continually improving our environmental performance. Environmental priorities and practices underpin our business objectives and growth.

We will undertake many sustainability initiatives throughout the life of the project. So far, we have:

- implemented environmental monitoring for noise, dust and vibration. We receive hourly reports which enable us to react to any breaches to the agreed limits where works are stopped, and additional measures are implemented
- Introduced a personal protective equipment (PPE) recycling bin as part of our sustainability strategy to reduce waste and prevent improper disposal
- saved wood waste for the Men's Sheds charity
- engaged with the community wood recycling scheme.



Delivering for the community

We have a total of 16 work experience students planned for the summer and have hosted six so far. The students have had the opportunity to shadow different departments, gaining a well rounded understanding of the project's various facets.

The students were involved in practical tasks on-site, providing hands on experience in the construction environment. This comprehensive experience aims to equip young people with valuable industry insights and practical skills, preparing them for future careers in the construction sector.





Wellbeing day at Oriel

We held a successful wellbeing day at Oriel for our staff on 21 June. The event was designed to promote health and wellness among our team, featuring a range of workshops and presentations by various professionals.

Highlights include:

- Insights on healthy eating and a balanced diet
- Advice on general health and wellness practices
- Optometrist from Moorfields Eye Hospital giving tips on eye health and maintenance
- OddBalls charity raised awareness of testicular cancer and provided information on self-examination and early detection.



Delivering for the community

We have been working closely with Global Generation and donated PPE to help build a new garden in the triangle site in Kings Cross.

On Wednesday 12 June, we hosted the Oriel construction working group (CWG) quarterly meeting and the attendees had the opportunity to have a site tour.



All our staff can use two days additional leave for volunteering. If you have ideas of charities we could partner with, please contact us at halimo.addow@bouygues-uk.com



Apprentices and work placements

The project has agreed targets with Camden Council under its S106 agreement and we are working closely with the Kings Cross Construction Skills Centre to advertise our apprenticeship opportunities.

We will have several opportunities throughout the life of the project so, if you are looking for a new role or are just leaving school and think construction might be for you, please contact Sam Mayo – Samantha.mayo@bouygues-uk.com

For ideas about all the different roles within the construction industry, have a look at the CITB website:

<https://www.goconstruct.org/>

<https://www.citb.co.uk/courses-and-qualifications/citb-apprenticeships/>

We will also be working with local schools and colleges to offer work experience opportunities where students get to experience a variety of different roles onsite.



Charity

In April, we fundraised £100 for Bowel Cancer Awareness Month. The Oriel team also took part in the London to Brighton bike ride in June in aid of the British Heart Foundation.

Moorfields Eye Charity Eye to Eye walk

Moorfields Eye Charity hosted its annual Eye to Eye fundraising walk on Sunday 23 June. It's the tenth anniversary of the event which, this year, moved to the summer and included a street party near the finishing line at Moorfields City Road. Bouygues UK took part in the brilliant event with a team of walkers to raise funds for Moorfields Eye Charity.



Find out more:

<https://moorfieldseyecharity.org.uk/events/eye-to-eye>



Your safety is our concern

Bouygues UK takes every precaution to keep you safe throughout the construction process.



At all times, our site will be secure and surrounded by fencing but building sites can be hazardous places:

- We dig deep holes
- We erect scaffolding
- We use large, noisy machinery.

Please do not enter the construction site, unless it is part of a pre-arranged visit by our project team.

- Our operatives and staff are trained to work safely.

Please help us to keep you and children safe and take extra care during the school holidays.

Considerate Constructors Scheme

As with all our projects, this site is registered with the scheme, and regular visits from the Considerate Constructors Scheme will help us to ensure that we continue to improve our performance in showing full respect for:

**CONTRACTOR
AND SUPPLIER
PARTNER**

**CONSIDERATE
CONSTRUCTORS
SCHEME**

- Community
- Workforce
- Environment

Please let us know if you have any concerns.

If you would like more information about the scheme, please visit:

www.ccscheme.org.uk

Want to speak with us?

We understand you will want to know what is happening in your area. Our team is available to answer any queries or concerns you may have and will be very pleased to hear from you. In addition, if you have any community projects that you think Bouygues UK could get involved with, please contact Samantha Mayo.



Samantha Mayo
Resident liaison

samantha.mayo@bouygues-uk.com

**Standard site
working hours:**

Monday – Friday:
8am – 6pm

Saturday:
8am – 1pm

There should be no noisy works before:
8am