

Oriel construction community newsletter

October 2024



BUILDING FOR LIFE

Dear neighbour,

Here's the latest update on the progress of Oriel, the new world-leading centre for eye care, research, and education, that we are building on St Pancras Way. With construction well underway, we want to make sure you're kept informed about the next steps and how they may impact you.



Oriel will bring together a range of expertise in a purpose-built, integrated centre to support advances in eye care, research, and education.



Oriel is being constructed on a two-acre site on St Pancras Way.

Meet the Bouygues UK team

We look forward to working with you over the next three years and being considerate constructors within the borough of Camden.

We support the local community with apprenticeships, work experience placements, engage with educational institutions in the area and take part in local charity initiatives. Read more about these initiatives in the newsletter.

Your key contacts are:



Neil Pixsley
Project director
neil.pixsley@bouygues-uk.com





Eric Pincemin
Production director
eric.pincemin@bouygues-uk.com



Sam Mayo
Resident liaison
samantha.mayo@bouygues-uk.com

Stay up to date

There are lots of ways to find out more about Oriel.

-  Moorfields.oriel@nhs.net
-  www.oriel-london.org.uk





Onsite activities

Since our last newsletter in July we have increased activity on and around the site:

- Site hoarding has been installed
- We have begun installing the façade of the building
- Level 7 is currently being built; we expect to reach the highest level, level 10, by the end of this year
- We are laying slabs for levels five and six, ensuring a solid foundation preparing the south-west area for the facade, glass balustrade and the installation of a waterproofing system
- So far we have cast 16,600 cubic metres of concrete with 2,515 tonnes of reinforcements
- The ground source heat pump and drainage systems are progressing well
- We're making great progress on the building's attenuation tank (collects, stores and releases rain water)



Upcoming activities

We are installing a full-size mock-up that will exhibit some of the main rooms of the building, including a patient consultation room and a science laboratory. This will help us refine the construction sequence, design details and improve our delivery.

Innovative technology

We're now using a new robot to enhance our building process. It precisely marks room layouts with autonomous navigation, ensuring accurate measurements, reducing errors, and boosting productivity.



The site in July 2024



The site in October 2024





Protecting the environment

Bouygues UK is committed to taking care of and protecting the environment, preventing pollution, and continually improving our environmental performance. Environmental priorities and practices underpin our business objectives and growth.

We will undertake many sustainability initiatives throughout the life of the project. So far, we have:

- implemented environmental monitoring for noise, dust and vibration. We receive hourly reports which enable us to react to any breaches to the agreed limits where works are stopped, and additional measures are implemented
- introduced a personal protective equipment (PPE) recycling bin as part of our sustainability strategy to reduce waste and prevent improper disposal
- saved wood waste for the Men's Sheds charity
- engaged with the community wood recycling scheme.



Charity

This year we will support these charities:

- Macmillan Cancer Support
- Vitality 10,000 London
- Breast Cancer Now
- Save the Children

All our staff can use two days additional leave for volunteering. If you have ideas of charities we could partner with, please contact Halimo Addow at halimo.addow@bouygues-uk.com



Wellbeing at Oriel

As part of a mental health initiative in May, Oriel has started an official run club every Wednesday lunchtime to promote physical activity.

Our run club is an excellent opportunity for team members to take a break from their busy work schedules, enjoy the outdoors, and engage in a healthy, social activity.



Oriel partners site visit

On 12 September, staff from the Oriel partners (Moorfields Eye Hospital, the UCL Institute of Ophthalmology and Moorfields Eye Charity) visited our site to review its progress.

They toured the site, observed how it has developed, and had the opportunity to ask our engineers questions.





Apprentices and work placements

The project has agreed targets with Camden Council under its S106 agreement and we are working closely with the Kings Cross Construction Skills Centre to advertise our apprenticeship opportunities.

We will have several opportunities throughout the life of the project so, if you are looking for a new role or are just leaving school and think construction might be for you, please contact Sam Mayo – samantha.mayo@bouygues-uk.com

For ideas about all the different roles within the construction industry, have a look at the CITB website:

<https://www.goconstruct.org/>

<https://www.citb.co.uk/courses-and-qualifications/citb-apprenticeships/>

We also work with local schools and colleges to offer work experience opportunities where students can experience a variety of roles onsite.

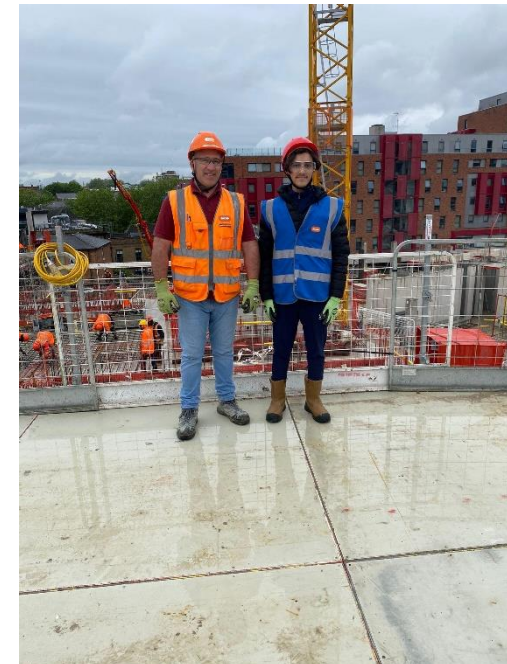


Delivering for the community

Summer work experience

This summer we have accommodated 11 students for a total of 14 weeks of work experience.

We have also hosted four student placements over the past 13 months, further emphasising our commitment to nurturing young talent.



Oriel construction community newsletter

October 2024



Oriel
Creating the centre for
advancing eye health



BUILDING FOR LIFE

Your safety is our concern

Bouygues UK takes every precaution to keep you safe throughout the construction process.



At all times, our site will be secure and surrounded by fencing but building sites can be hazardous places:

- We dig deep holes
- We erect scaffolding
- We use large, noisy machinery.

Please do not enter the construction site, unless it is part of a pre-arranged visit by our project team.

- Our operatives and staff are trained to work safely.

Please help us to keep you and children safe and take extra care during the school holidays.

Considerate Constructors Scheme

As with all our projects, this site is registered with the scheme, and regular visits from the Considerate Constructors Scheme will help us to ensure that we continue to improve our performance in showing full respect for:

- Community
- Workforce
- Environment

Please let us know if you have any concerns.

If you would like more information about the scheme, please visit:

www.ccscheme.org.uk

**CONTRACTOR
AND SUPPLIER
PARTNER**

**CONSIDERATE
CONSTRUCTORS
SCHEME**

Want to speak with us?

We understand you will want to know what is happening in your area. Our team is available to answer any queries or concerns you may have and will be very pleased to hear from you. In addition, if you have any community projects that you think Bouygues UK could get involved with, please contact Sam Mayo.



Sam Mayo
Resident liaison

samantha.mayo@bouygues-uk.com

**Standard site
working hours:**

Monday – Friday:
8am – 6pm

Saturday:
8am – 1pm

There should be no noisy works before 8am