

Oriel construction community newsletter

January 2025



BUILDING FOR LIFE

Dear neighbour,

Here's the latest update on the progress of Oriel, the new world-leading centre for eye care, research, and education, that we are building on St Pancras Way. With construction well underway, we want to make sure you're kept informed about the next steps and how they may impact you.



Oriel will bring together a range of expertise in a purpose-built, integrated centre to support advances in eye care, research, and education.



The new centre is being constructed on a two-acre site on St Pancras Way.

Meet the Bouygues UK team

We look forward to working with you over the next few years and being considerate constructors within the borough of Camden.

We support the local community with apprenticeships, work experience placements, engage with educational institutions in the area and take part in local charity initiatives. Read more about these initiatives in the newsletter.

Your key contacts are:



Neil Pixsley
Project director
neil.pixsley@bouygues-uk.com





Eric Pincemin
Production director
eric.pincemin@bouygues-uk.com



Sam Mayo
Resident liaison
samantha.mayo@bouygues-uk.com

Stay up to date

There are lots of ways to find out more about Oriel.

-  Moorfields.oriel@nhs.net
-  www.oriel-london.org.uk





Onsite activities

Since our last newsletter in October, we have increased activity on and around the site:

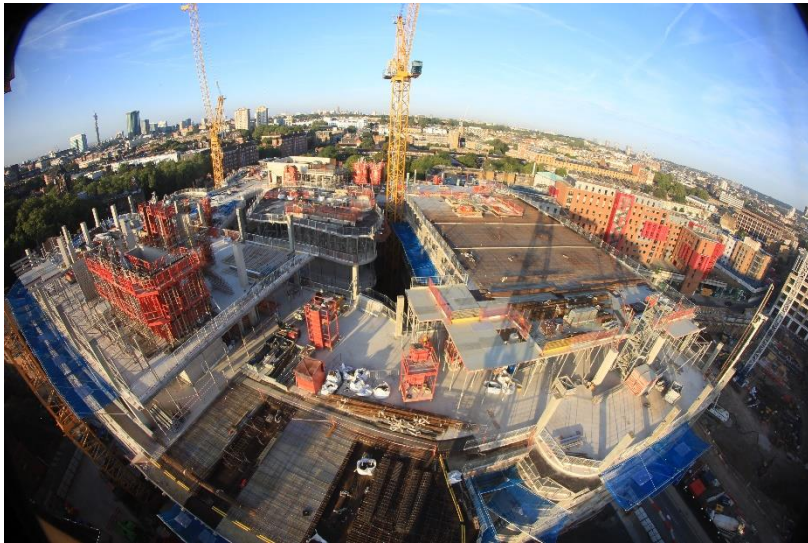
- We have completed the building's structure and reached the highest point of the building
- We have begun installing the façade and made great progress with 800 panels installed
- We have used a special low-carbon concrete, which has helped save 1,000 tons of CO₂ emissions
- The ground source heat pump and drainage systems are complete
- We're making great progress on the building's attenuation tank (collects, stores and releases rain water)
- We have poured over 26,000 cubic metres of concrete to date



Upcoming activities

- Complete façade works to Level 8
- Progress internal works and mechanical, electrical and plumbing works
- Works on internal atrium façade and the ETFE roof (a transparent, lightweight, and durable roofing system made from Ethylene-Tetra-Fluoro-Ethylene)
- We will dismantle the first tower crane (TC1) in early February.

The site in October 2024



The site in December 2024





Protecting the environment

Bouygues UK is committed to taking care of and protecting the environment, preventing pollution, and continually improving our environmental performance. Environmental priorities and practices underpin our business objectives and growth.

We will undertake many sustainability initiatives throughout the life of the project. So far, we have:

- implemented environmental monitoring for noise, dust and vibration. We receive hourly reports which enable us to react to any breaches to the agreed limits where works are stopped, and additional measures are implemented
- introduced a personal protective equipment (PPE) recycling bin as part of our sustainability strategy to reduce waste and prevent improper disposal
- saved wood waste for the Men's Sheds charity
- engaged with the community wood recycling scheme.



Charity

Our team has again volunteered with Social Bite, a charity and social business providing homes, jobs and food. It's a movement that aims to end homelessness.



All our staff can use two days additional leave for volunteering. If you have ideas of charities we could partner with, please contact Halimo Addow at halimo.addow@bouygues-uk.com



Topsite award

We've been awarded a TopSite certificate, an international CSR accreditation initiative by Bouygues Construction, honouring exceptional construction sites. It evaluates factors such as health and safety, environmental impact, quality, societal contributions, and social value.



Oriel partners site visit

On 12 December, staff from the Oriel partners (Moorfields Eye Hospital, the UCL Institute of Ophthalmology and Moorfields Eye Charity) visited the site to review progress.

They toured the site, observed how it has developed, and had the opportunity to ask our engineers questions.





Topping out milestone

Oriel reached an exciting milestone on 11 December marking the completion of the concrete structure!

Fabienne Viala, Chair and Chief Executive Officer of Bouygues UK, said: "I'm thrilled to celebrate the topping out of this incredible project. The progress we've made truly showcases the power of our collaboration and shared vision."

Laura Wade-Gery, Chair of Moorfields Eye Hospital NHS Foundation Trust, said: "We are extremely proud of the centre's co-design ethos and believe we have created an environment that will enable us to continue to provide the highest quality patient care while driving forward innovation in ophthalmology"

Professor Alan Thompson, Dean of the UCL Faculty of Brain Sciences, said: "The enviable dedicated space for education throughout the building will provide us with exemplar facilities for training future generations of ophthalmic experts."





Apprentices and work placements

The project has agreed apprenticeship targets with Camden Council under its S106 agreement and we are working closely with the King's Cross Construction Skills Centre to advertise our apprenticeship opportunities.

We will have several opportunities throughout the life of the project so, if you are looking for a new role or are just leaving school and think construction might be for you, please contact Sam Mayo – samantha.mayo@bouygues-uk.com

For ideas about all the different roles within the construction industry, have a look at the CITB website:

<https://www.goconstruct.org/>

<https://www.citb.co.uk/courses-and-qualifications/citb-apprenticeships/>

We also work with local schools and colleges to offer work experience opportunities where students can experience a variety of roles onsite.



Delivering for the community

We have contributed to the Trussell Food Bank, donated winter clothing to the Single Homeless Project, as well as Christmas hampers. Our team also took part in Christmas jumper fundraising for Save the Children.



Your safety is our concern

Bouygues UK takes every precaution to keep you safe throughout the construction process.



At all times, our site will be secure and surrounded by fencing but building sites can be hazardous places:

- We dig deep holes
- We erect scaffolding
- We use large, noisy machinery.

Please do not enter the construction site, unless it is part of a pre-arranged visit by our project team.

- Our operatives and staff are trained to work safely.

Please help us to keep you and children safe and take extra care during the school holidays.

Considerate Constructors Scheme

As with all our projects, this site is registered with the scheme, and regular visits from the Considerate Constructors Scheme will help us to ensure that we continue to improve our performance in showing full respect for:

**CONTRACTOR
AND SUPPLIER
PARTNER**

**CONSIDERATE
CONSTRUCTORS
SCHEME**

- Community
- Workforce
- Environment

Please let us know if you have any concerns.

If you would like more information about the scheme, please visit:

www.ccscheme.org.uk

Want to speak with us?

We understand you will want to know what is happening in your area. Our team is available to answer any queries or concerns you may have and will be very pleased to hear from you. In addition, if you have any community projects that you think Bouygues UK could get involved with, please contact Sam Mayo.



Sam Mayo
Resident liaison

samantha.mayo@bouygues-uk.com

**Standard site
working hours:**

Monday – Friday:
8am – 6pm

Saturday:
8am – 1pm

There should be no noisy works before 8am